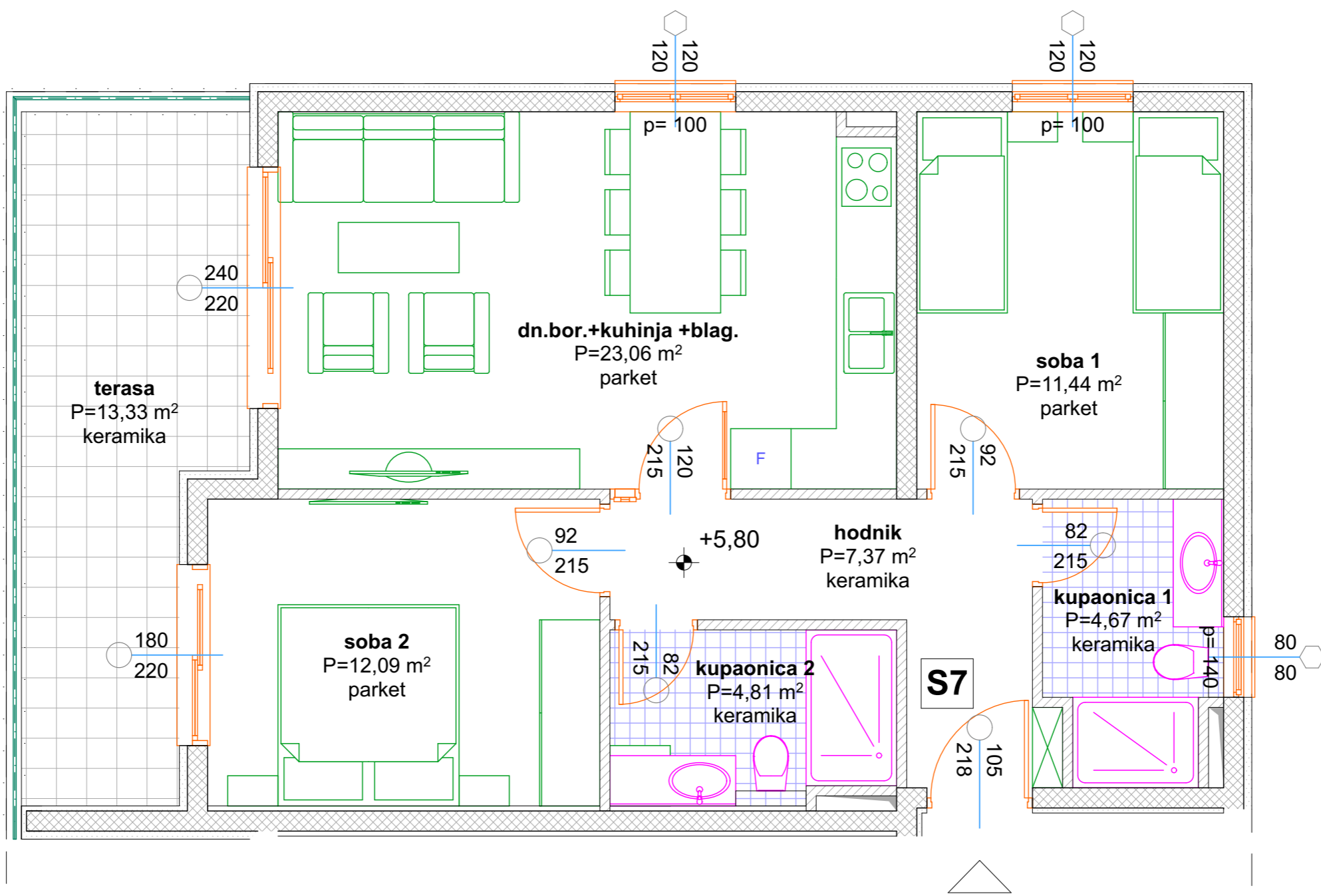


TLOCRT 2. KATA
M 1: 50



| STAN S7 | POVRŠINA |
|-------------------------------|----------------------------|
| soba 1 | 11,44 m ² |
| soba 2 | 12,09 m ² |
| dn. boravak+kuh.+blagovaonica | 23,06 m ² |
| kupaonica 1 | 4,67 m ² |
| kupaonica 2 | 4,81 m ² |
| hodnik | 7,37 m ² |
| UKUPNO: | 63,44 m² |
| terasa (50% 13,33) | 6,67 m ² |
| SVEUKUPNO: | 70,11 m² |