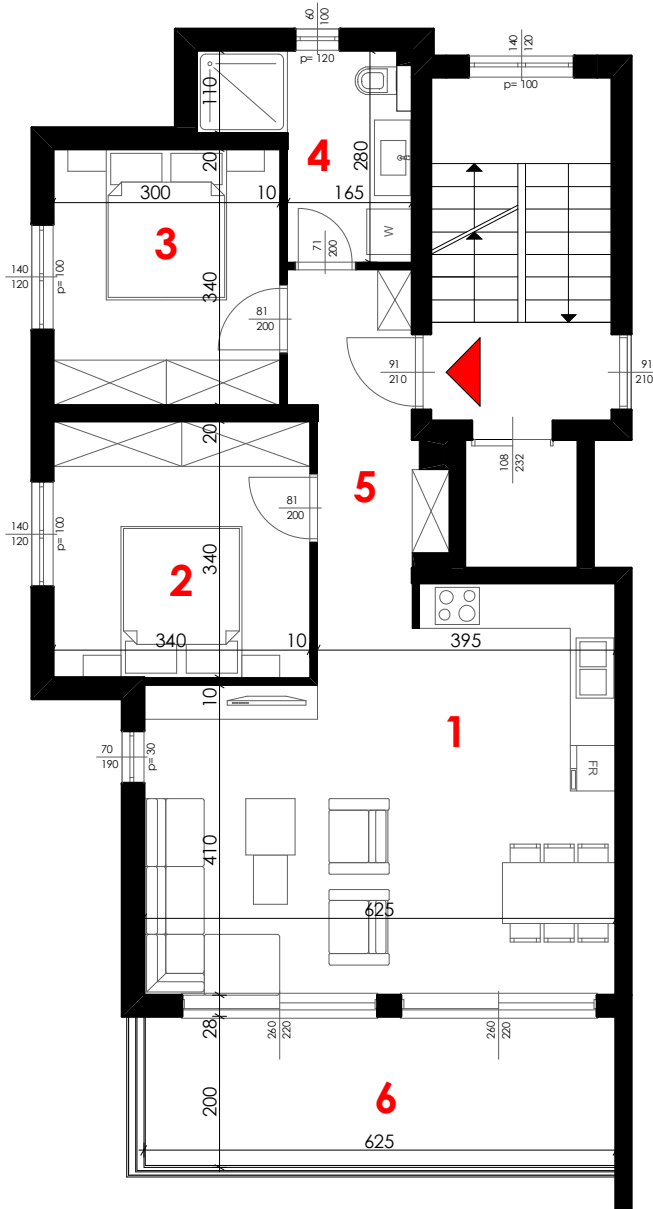
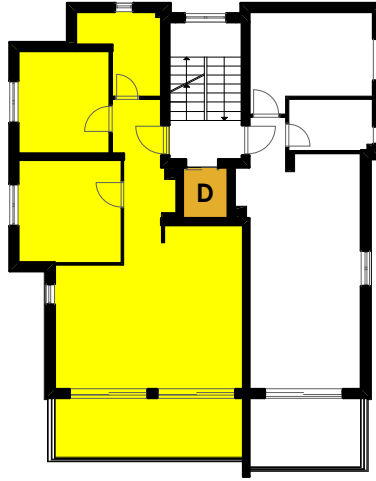
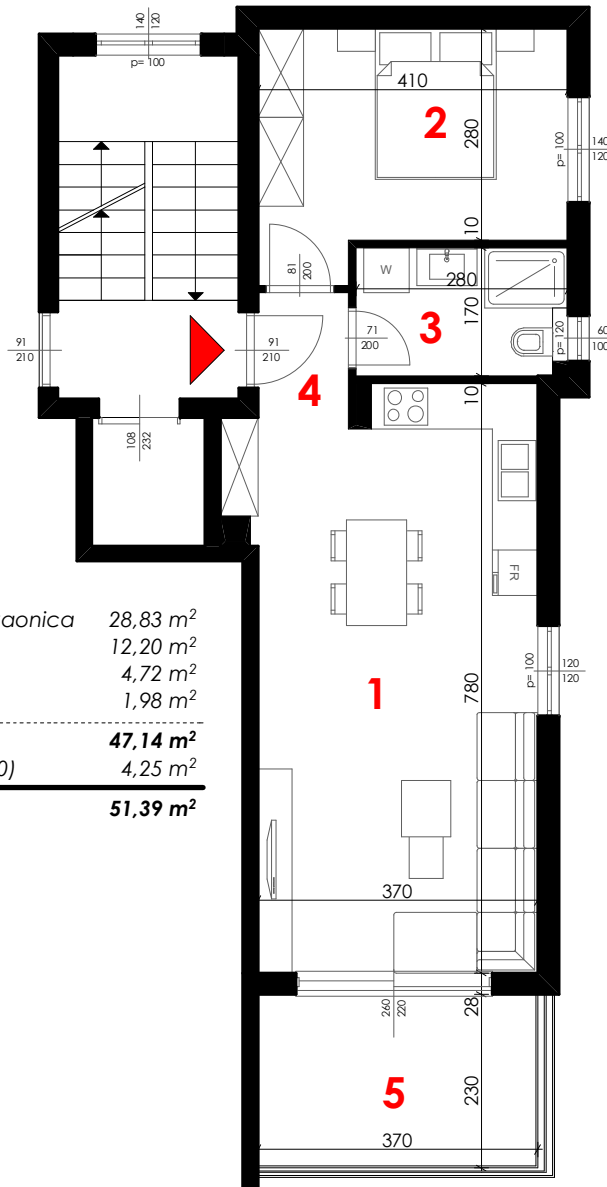
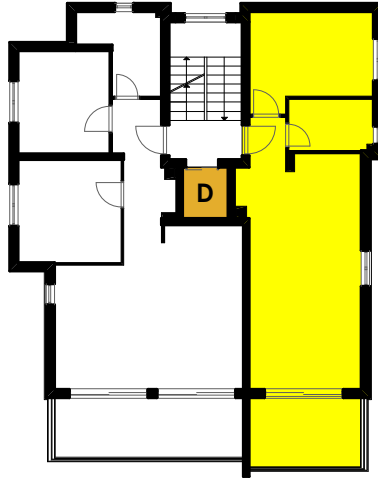


| | |
|------------------|---|
| 1. OSTAVA O1 | 4,95 x 0,60 = 2,97 m² |
| 2. OSTAVA O2 | 4,95 x 0,60 = 2,97 m² |
| 3. OSTAVA O3 | 4,37 x 0,60 = 2,62 m² |
| 4. OSTAVA O4 | 6,49 x 0,60 = 3,89 m² |
| 5. OSTAVA O5 | 4,40 x 0,60 = 2,64 m² |
| 6. OSTAVA O6 | 4,91 x 0,60 = 2,95 m² |
| 7. PARKING PGM1 | 17,77 x 0,50 = 8,86 m² |
| 8. PARKING PGM2 | 16,59 x 0,50 = 8,29 m² |
| 9. PARKING PGM3 | 28,05 x 0,50 = 14,02 m² |
| 10. PARKING PM4 | 14,91 x 0,20 = 2,98 m² |
| 11. PARKING PM5 | 11,04 x 0,20 = 2,21 m² |
| 12. PARKING PM6 | 11,04 x 0,20 = 2,21 m² |
| 13. PARKING PM7 | 11,04 x 0,20 = 2,21 m² |
| 14. PARKING PM8 | 11,04 x 0,20 = 2,21 m² |
| 15. PARKING PM9 | 11,04 x 0,20 = 2,21 m² |
| 16. PARKING PM10 | 11,04 x 0,20 = 2,21 m² |
| 17. PARKING PM11 | 11,04 x 0,20 = 2,21 m² |
| 18. PARKING PM12 | 14,00 x 0,20 = 2,80 m² |
| 19. PARKING PM13 | 16,33 x 0,20 = 3,26 m² |
| 20. PARKING PM14 | 11,27 x 0,20 = 2,54 m² |



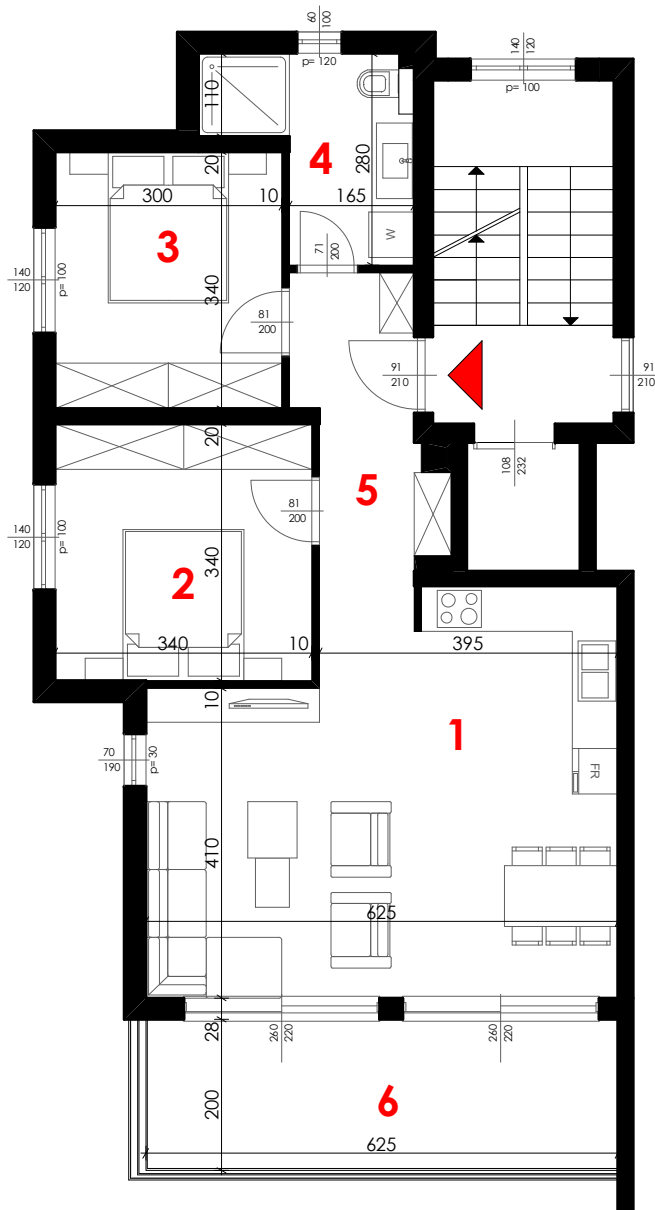
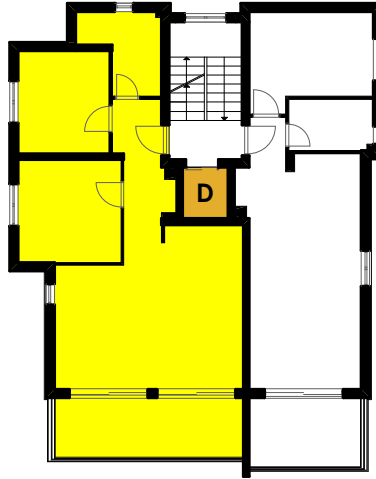
| | |
|--|---------------------------|
| 1. dn. boravak + kuhinja + blagovaonica | 30,15 m ² |
| 2. soba | 11,56 m ² |
| 3. soba | 10,20 m ² |
| 4. kupaonica | 5,90 m ² |
| 5. hodnik | 7,25 m ² |
| <hr/> | |
| 6. natkriveni balkon (12,50 m ² x 0,50) | 6,25 m ² |
| | 71,31m² |





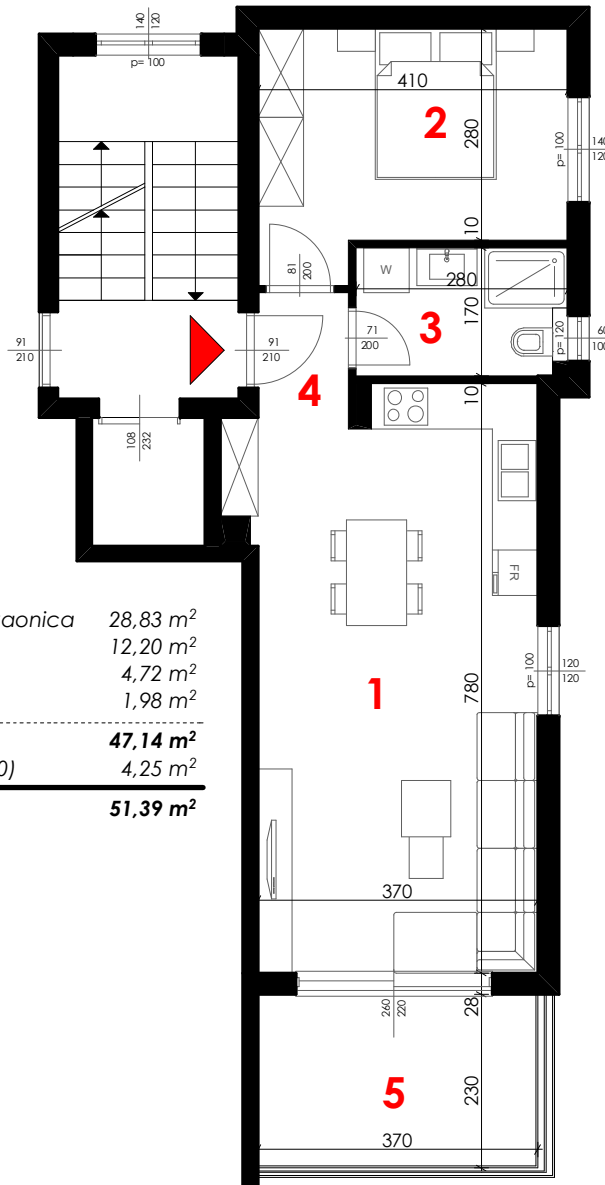
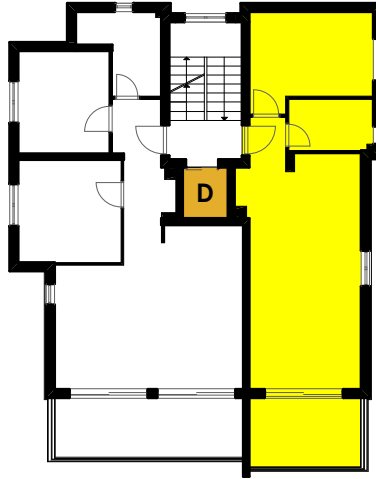
| | |
|---|----------------------------|
| 1. dn. boravak + kuhinja + blagovaonica | 28,83 m ² |
| 2. soba | 12,20 m ² |
| 3. kupaonica | 4,72 m ² |
| 4. hodnik | 1,98 m ² |
| | 47,14 m² |
| 5. natkriveni balkon (8,51 m ² x 0,50) | 4,25 m ² |
| | 51,39 m² |





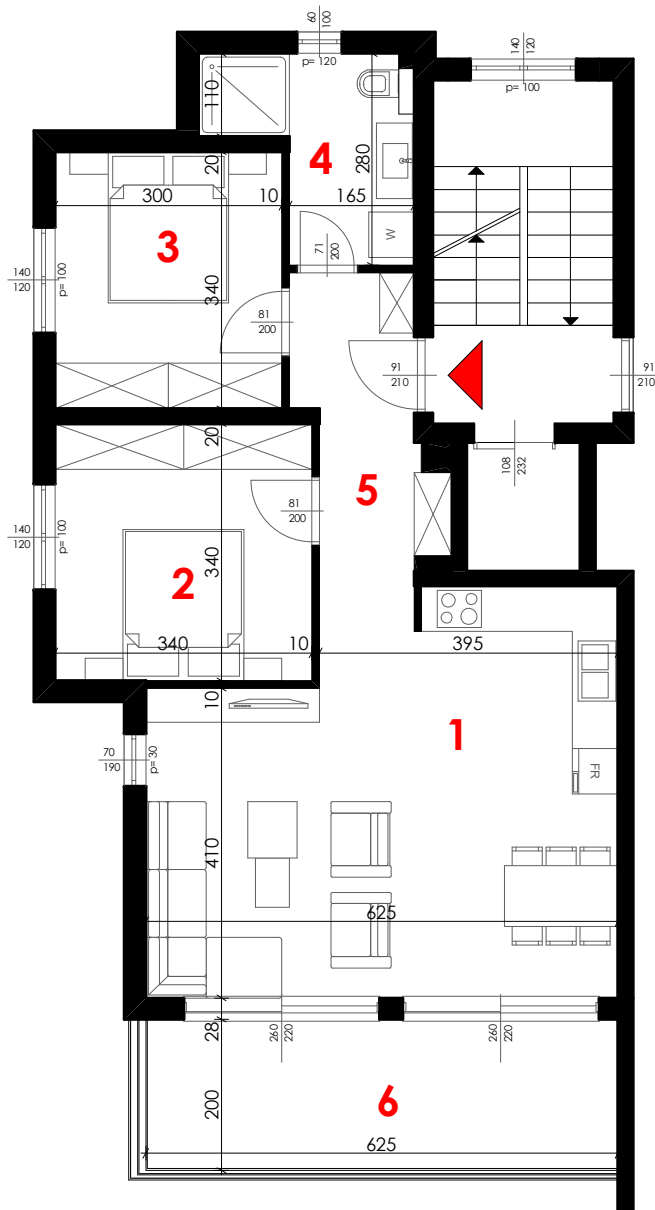
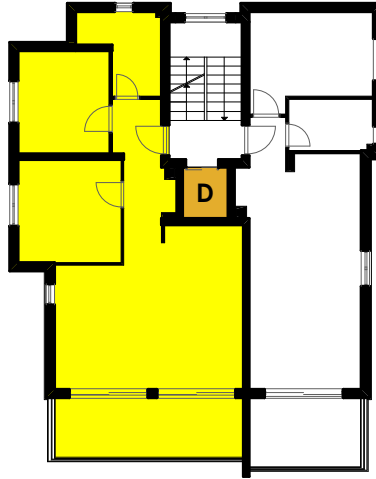
| | |
|--|---------------------------|
| 1. dn. boravak + kuhinja + blagovaonica | 30,15 m ² |
| 2. soba | 11,56 m ² |
| 3. soba | 10,20 m ² |
| 4. kupaonica | 5,90 m ² |
| 5. hodnik | 7,25 m ² |
| <hr/> | |
| 6. natkriveni balkon (12,50 m² x 0,50) | 6,25 m² |
| | 71,31m² |





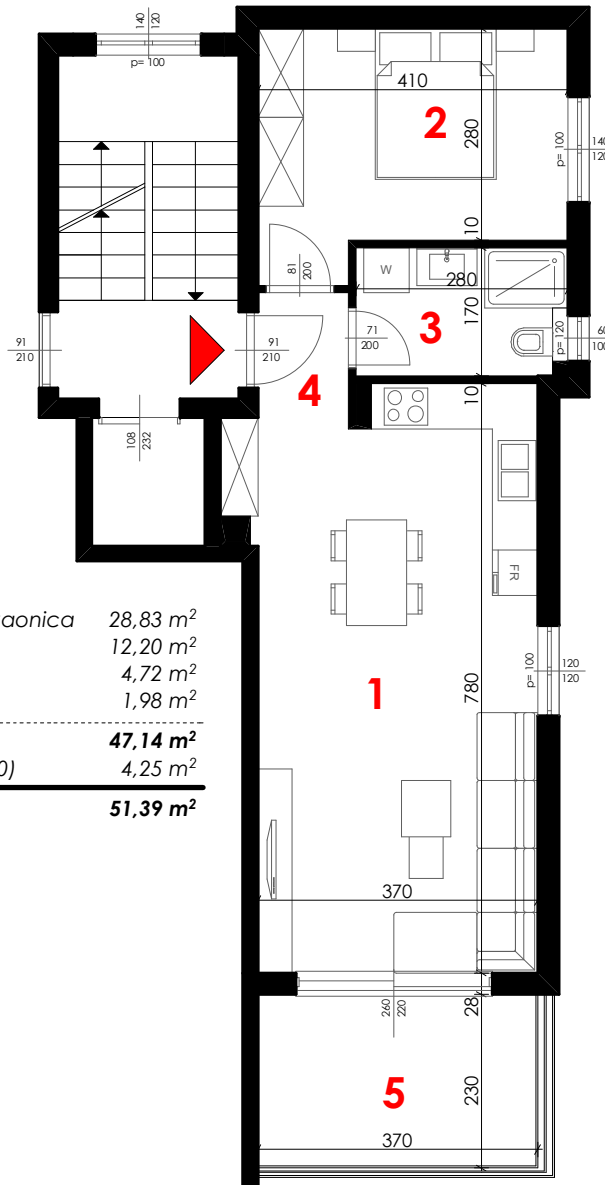
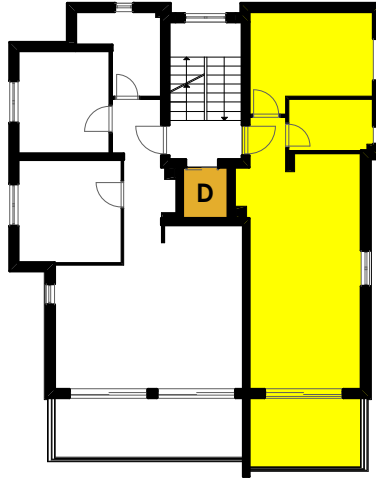
| | |
|---|----------------------------|
| 1. dn. boravak + kuhinja + blagovaonica | 28,83 m ² |
| 2. soba | 12,20 m ² |
| 3. kupaonica | 4,72 m ² |
| 4. hodnik | 1,98 m ² |
| | 47,14 m² |
| 5. natkriveni balkon (8,51 m ² x 0,50) | 4,25 m ² |
| | 51,39 m² |





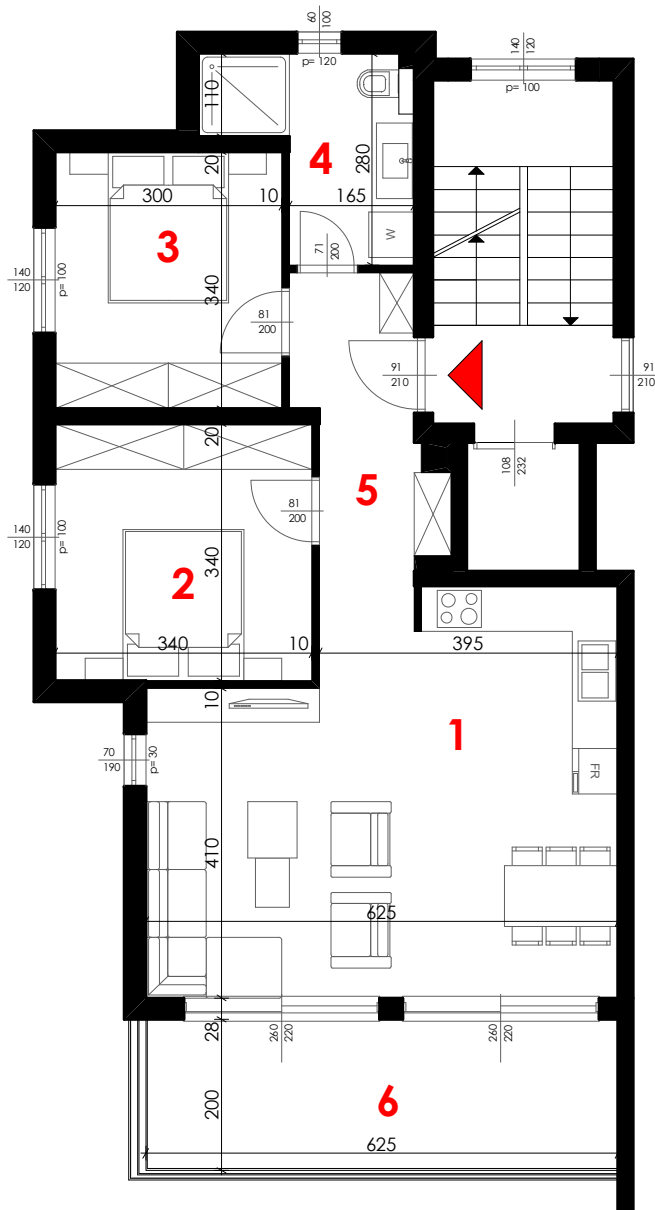
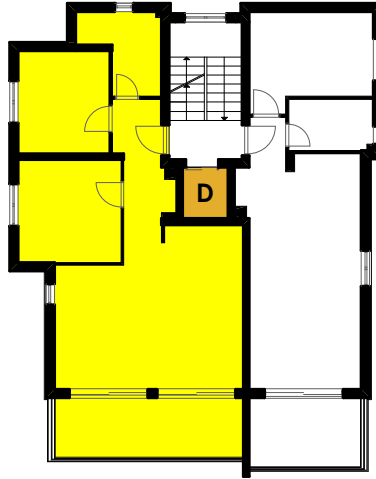
| | |
|--|----------------------------|
| 1. dn. boravak + kuhinja + blagovaonica | 30,15 m ² |
| 2. soba | 11,56 m ² |
| 3. soba | 10,20 m ² |
| 4. kupaonica | 5,90 m ² |
| 5. hodnik | 7,25 m ² |
| <hr/> | |
| 6. natkriveni balkon (12,50 m ² x 0,50) | 65,06 m ² |
| | 6,25 m ² |
| | 71,31 m² |





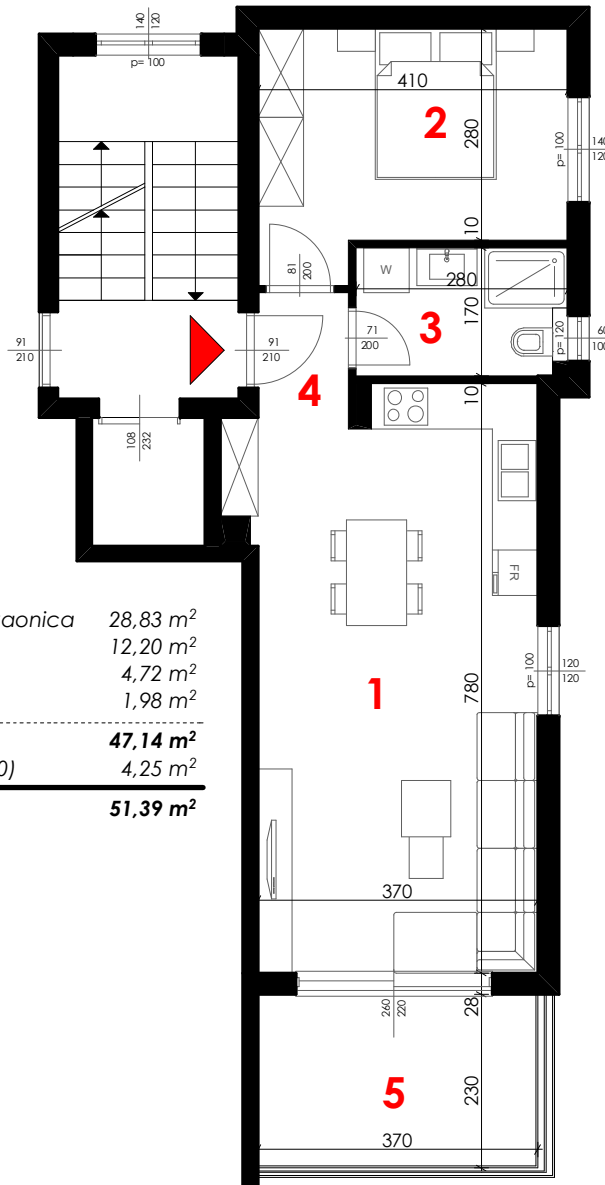
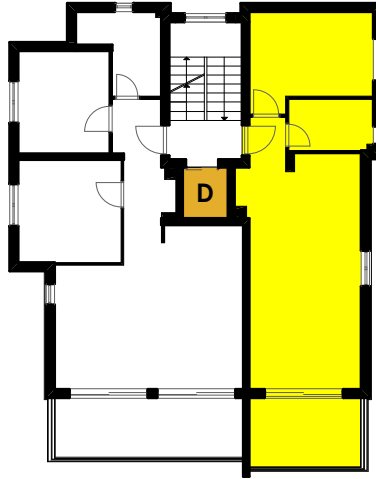
| | |
|---|----------------------------|
| 1. dn. boravak + kuhinja + blagovaonica | 28,83 m ² |
| 2. soba | 12,20 m ² |
| 3. kupaonica | 4,72 m ² |
| 4. hodnik | 1,98 m ² |
| | 47,14 m² |
| 5. natkriveni balkon (8,51 m ² x 0,50) | 4,25 m ² |
| | 51,39 m² |





| | |
|--|----------------------------|
| 1. dn. boravak + kuhinja + blagovaonica | 30,15 m ² |
| 2. soba | 11,56 m ² |
| 3. soba | 10,20 m ² |
| 4. kupaonica | 5,90 m ² |
| 5. hodnik | 7,25 m ² |
| <hr/> | |
| 6. natkriveni balkon (12,50 m ² x 0,50) | 65,06 m ² |
| | 6,25 m ² |
| | 71,31 m² |





| | |
|---|----------------------------|
| 1. dn. boravak + kuhinja + blagovaonica | 28,83 m ² |
| 2. soba | 12,20 m ² |
| 3. kupaonica | 4,72 m ² |
| 4. hodnik | 1,98 m ² |
| | 47,14 m² |
| 5. natkriveni balkon (8,51 m ² x 0,50) | 4,25 m ² |
| | 51,39 m² |

